



A LOOK AT THE PCS K-12 HUMAN GROWTH AND DEVELOPMENT

Ashley Grimes, Specialist
Pre K-12 Physical and Health Ed
Pinellas County Schools
grimesa@pcsb.org

QUIZ

What form of Human Sexuality instruction does Pinellas County Schools Use?

- A. Abstinence-only Until Marriage Programs
- B. Abstinence-centered Education
- C. Abstinence-based/plus Education
- D. Comprehensive Sex Education

ABSTINENCE-ONLY UNTIL MARRIAGE PROGRAMS

Abstinence-Only-Until-Marriage Programs, sometimes called Sexual Risk Avoidance Programs, teach abstinence as the only morally correct option of sexual expression for teenagers. They usually censor information about contraception and condoms for the prevention of sexually transmitted diseases (STDs) and unintended pregnancy.

ABSTINENCE-CENTERED EDUCATION

Another term normally used to mean abstinence-only programs.

ABSTINENCE-BASED/PLUS EDUCATION

Programs which include information about contraception and condoms in the context of strong abstinence messages.

COMPREHENSIVE SEX EDUCATION

Teaches about abstinence as the best method for avoiding STDs and unintended pregnancy, but also teaches about condoms and contraception to reduce the risk of unintended pregnancy and of infection with STDs, including HIV. It also teaches interpersonal and communication skills and helps young people explore their own values, goals, and options.

QUIZ ANSWER

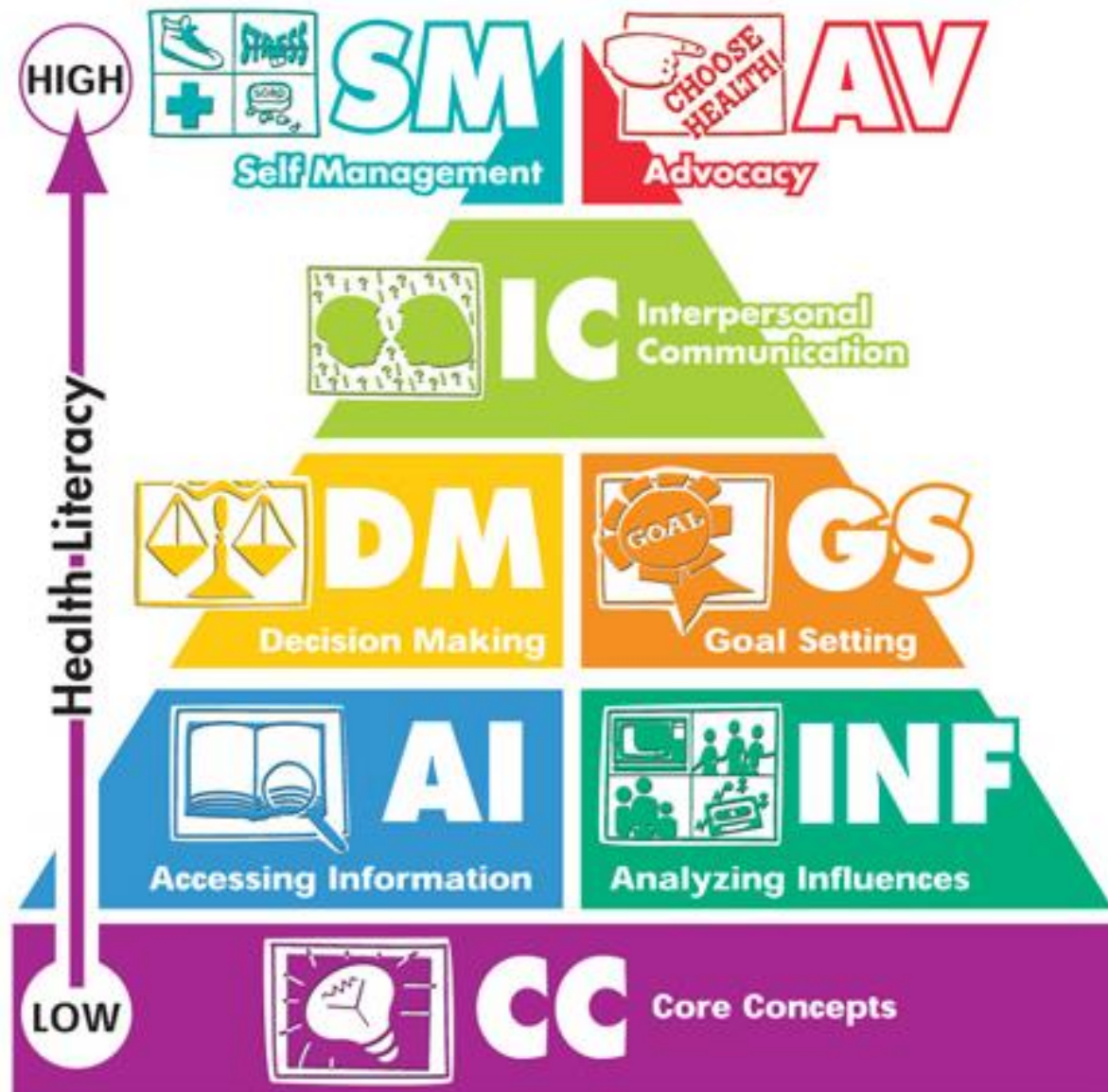
What form of Human Sexuality instruction does Pinellas County Schools Use?

- A. Abstinence-only Until Marriage Programs
- B. Abstinence centered Education
- C. Abstinence-based/plus Education
- D. Comprehensive Sex Education

STATE LAW

Section 1003.42 (2)(n), Florida State Statutes Required Instruction - Comprehensive health education that addresses concepts of community health; consumer health; environmental health; **family life, including an awareness of the benefits of sexual abstinence as the expected standard and the consequences of teenage pregnancy**; mental and emotional health; injury prevention and safety; Internet safety; nutrition; personal health; **prevention and control of disease**; and substance use and abuse. *The health education curriculum for students in grades 7 through 12 shall include a teen dating violence and abuse component that includes, but is not limited to, the definition of dating violence and abuse, the warning signs of dating violence and abusive behavior, the characteristics of healthy relationships, measures to prevent and stop dating violence and abuse, and community resources available to victims of dating violence and abuse.*

National Health Education Standards

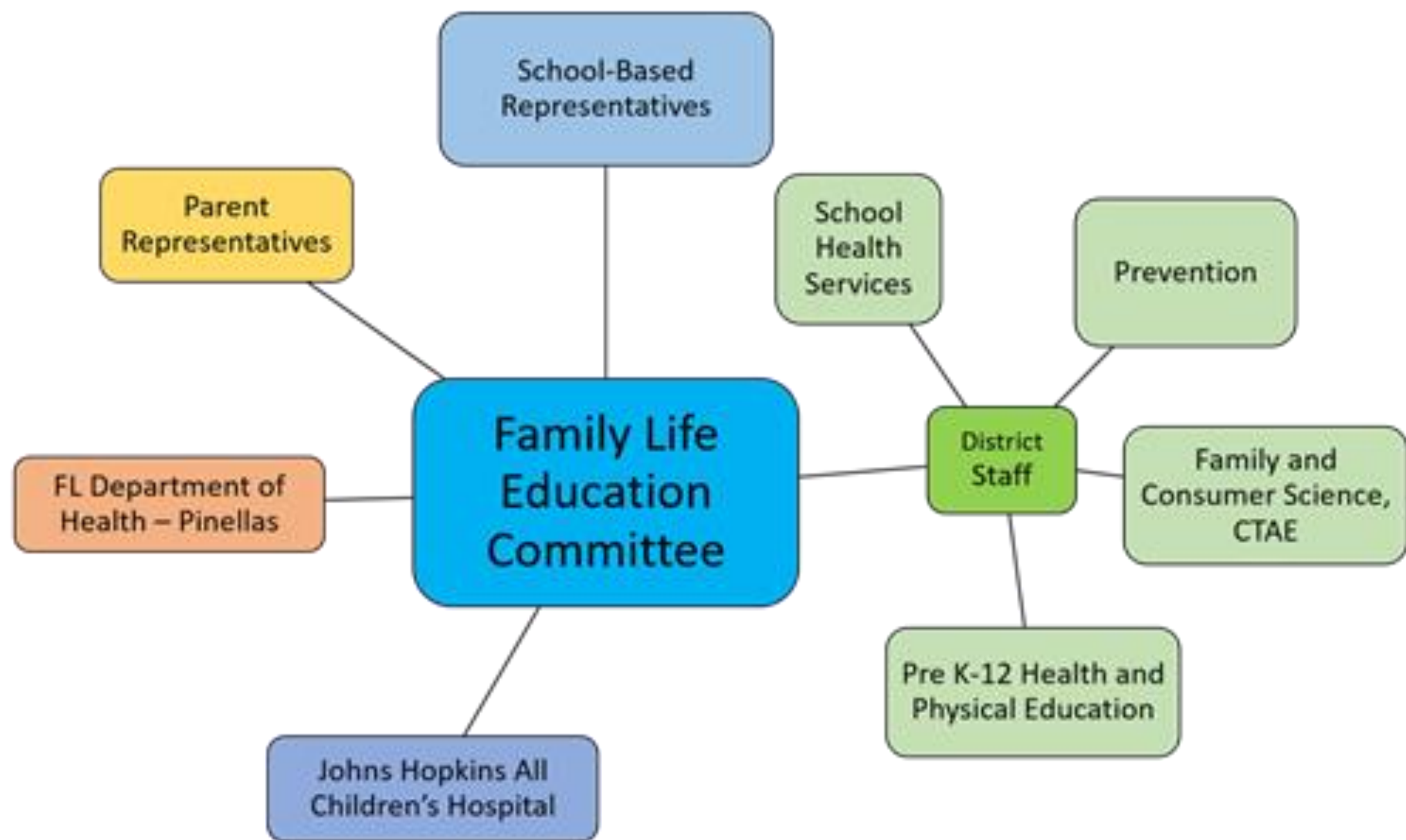


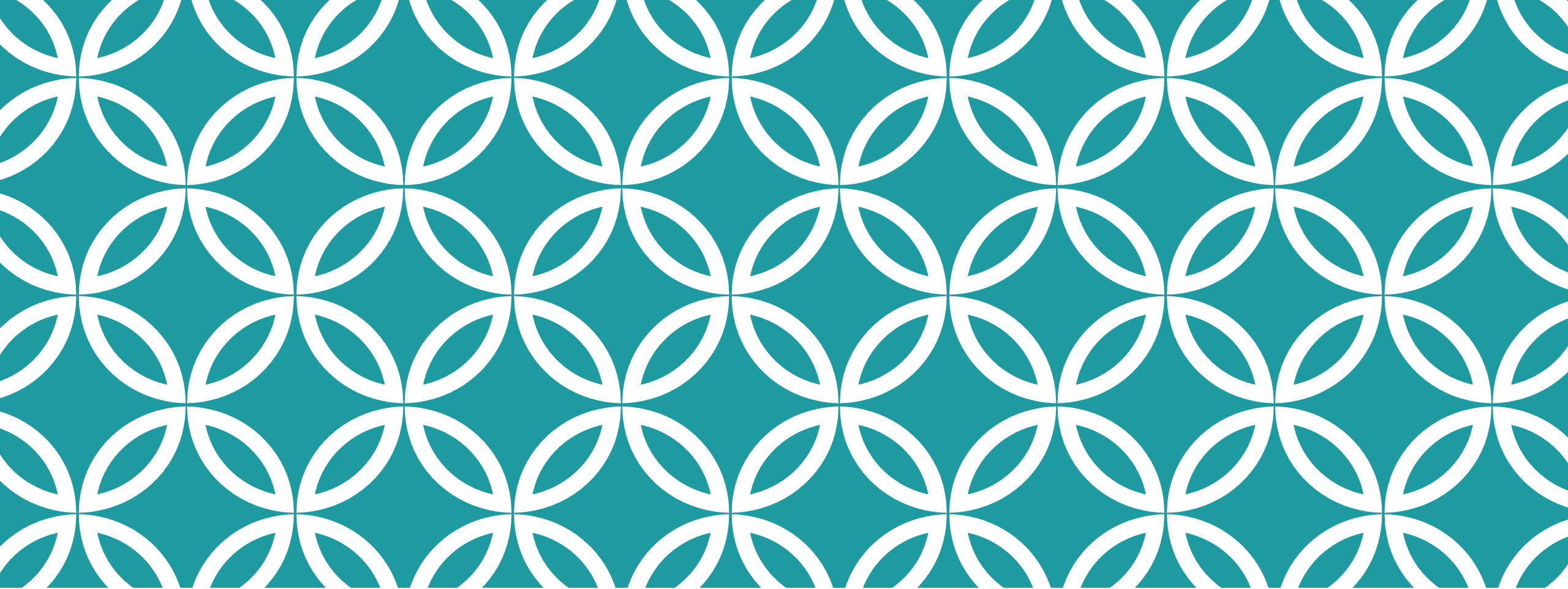
PCS SCHOOL BOARD POLICY:

2417 — HUMAN SEXUALITY CURRICULUM

The Superintendent shall recommend to the School Board a comprehensive elementary and secondary human sexuality curriculum which shall be abstinence-based. The Superintendent shall establish the Family Life Education Committee to oversee the delivery of instruction related to human sexuality, drug-use prevention, and mental health curriculum. Membership of the Family Life Education Committee shall consist of District staff with expertise in human sexuality education, community health leaders, school based administrators and teachers, and parent representatives.

Parents shall be notified in advance of human sexuality content and shall be given a chance to preview content prior to student instruction. Parents may exempt their student from part of or the entire human sexuality curriculum by written request to the principal.





ELEMENTARY |

HEALTH EDUCATION PROVIDED 4-WAYS

- 5 Minute Skill Builders
- ELA Modules
- Physical Activity During Health
- Guest Speaker (content enhancement)

KINDERGARTEN

Key Growth and Development Content:

- Getting along with others; controlling my actions.
- Healthy Habits lesson
- When I get angry
- Family
- Characteristics of a good friend
- Expressing feelings to a friend

1ST GRADE

Key Growth and Development Content:

- The students will be able to identify their private parts.
- The students will be able to identify who to tell if they experience a bad touch.
- The students will be able to say the Touching Rule.
- The student will be able to differentiate between a good and a bad touch.
- The students will be able to identify different feelings by facial expressions.

2ND GRADE

Key Growth and Development Content:

- Personal Space and Boundaries of others.
- Identifying qualities of a good friend.
- Bullying
- Inappropriate Touches
- Germs and Personal Hygiene

3RD GRADE

Key Growth and Development Content:

- Stranger Safety
- Internet Safety
- Self Respect
- Conflict Resolution
- Bullying
- Empathy

4TH GRADE

Key Growth and Development Content:

- Healthy Body
 - Feelings about growing and changing
 - Difficulties about growing up.
- Organwise Guys: Body Systems
- Personal Health: Handwashing (Hygiene)
- Bullying
- Building Relationships

5TH GRADE

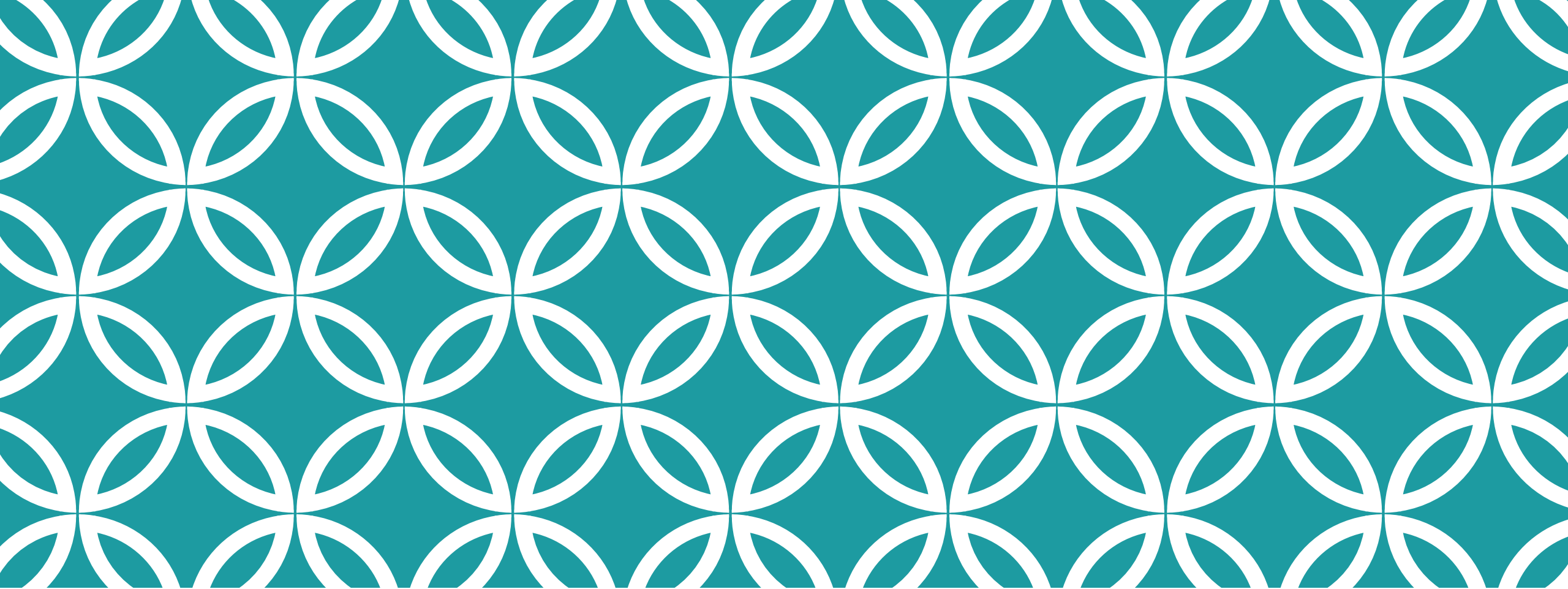
Key Growth and Development Content:

- Stages of growth from birth to adulthood
- Male and female reproductive systems
- Bodily changes that occur during puberty
- Hygiene during puberty
- Social and emotional changes that occur during puberty
- Responsibilities associated with growth and development
- Fetal development and the birth process
- HIV/AIDS awareness

*****Parent consent form is provided for this lesson***

TEACHER DO'S AND DON'TS

- Adhere to PCS Administrative Guidelines (FLE)
- Clear communication (with Students and Parents)
- Lesson Plans
- Preview new materials (district provided)
- Contact Health Specialist for Guidance
- Stay current on sensitive issues
- Plan a simple all purpose response for the tough questions
- Keep to the facts.



MIDDLE SCHOOL |

5410.02

D. A Health Education course is required for a minimum of one (1) semester in middle school. Additional topics associated with Health Education will also be integrated within the physical education curriculum for students within the middle grades.



HEALTH CONTENT IS PRESENTED THROUGH...

- M/J Fitness (Nutrition, Goal Setting, Decision-making)
- M/J Health – 7th Grade (M/J Health 5)*
- M/J Wellness Education (Grade 8)*
- Peer Counseling (Elective)

HUMAN SEXUALITY UNIT (APPROX 4 WEEKS)

- Personal Hygiene
- Puberty, Male/Female Reproductive System
- (including structure and function); Emotional, Social and Physical Changes Occurring During Adolescence
- Menstruation/Fertilization/Fetal Development
- Respectful Social Behavior ; Teen Dating Relationships
- Human Trafficking
- Sexual Respect for Developmental Changes and Gender Issues
- Sexual Abstinence
- Consequences Of Teen Pregnancy
- Causes And Prevention Of Birth Defects/ Fetal Alcohol Syndrome/ Shaken Baby Syndrome
- Causes, Transmissions and Prevention of HIV/AIDS and other STD/STI (Barrier Protection)

PARENT CONSENT



Dear Parent/Guardian,

As part of its abstinence-based health curriculum, the Pinellas County School Board has approved an age-appropriate teacher-directed lesson on condoms for 7th grade students. During the lesson, condoms will be presented as a form of barrier protection to reduce (but not eliminate) the risk of sexually transmitted infections including HIV. This abstinence-based lesson will focus on statistics showing that latex condoms may reduce the risk of HIV infection and other sexually transmitted infections when used correctly and consistently for all forms of intercourse.

On _____, students will participate in this health education lesson. During this lesson, teachers will guide students to compare how a surgical latex glove and how a latex condom both serve as barriers to reduce the risk of transmission of communicable diseases. This lesson will allow student-teacher discussion and promote critical thinking.

To eliminate any misconceptions: **condoms will not be provided to any students either during or after this lesson.**

Students not participating in the lesson on condoms will have an alternate abstinence-only lesson in another area of the school. That area will be supervised while the student completes independent study lesson. Your choice will be respected, and your child will in no way be questioned about it. If you have any questions regarding either lesson, please contact me at _____.

Please complete the bottom portion and return to _____ at the school. If we do not receive your election, we will place your students in the alternate, abstinence-only lesson.

Sincerely,

Principal

Health Education Teacher

Please Sign and Return

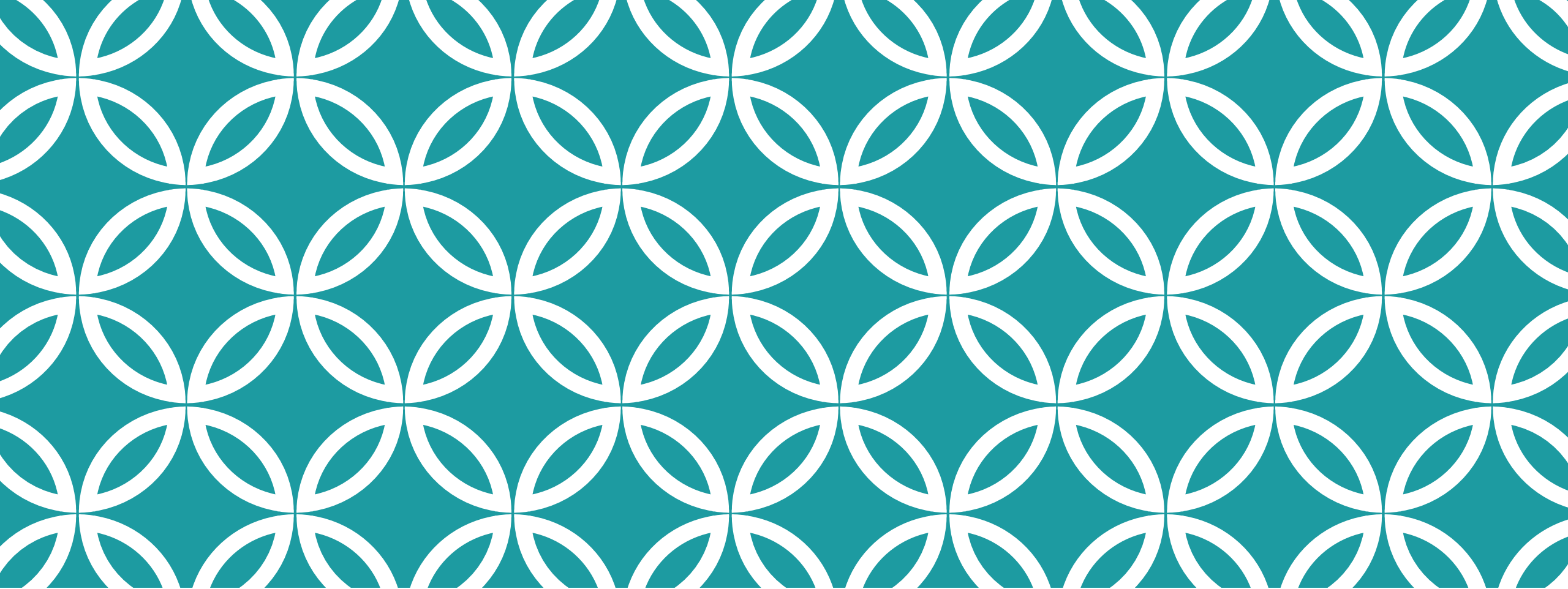
My son/daughter _____

Check one of the following:

- ☐ Has permission to attend the health education lesson on condoms which will focus on the reduction of the risk of HIV transmission.
- ☐ Does not have permission to attend the health education lesson on condoms which will focus on the reduction of the risk of HIV transmission. I understand that my child will receive an alternative abstinence-only assignment during this class period.

Parent/Guardian Signature

Date



**HIGH SCHOOL: HEALTH
OPPORTUNITIES THROUGH
PHYSICAL EDUCATION**

HUMAN SEXUALITY RESOURCES

- Lesson 1: Sexuality (Media influences, Advertisements)
- Lesson 2: Puberty (Endocrine System, Secondary Physical Characteristics)
- Lesson 3: Reproductive System
- Lesson 4: Abstinence
- Lesson 5: Barrier Protection: Disease Prevention
- Lesson 6: Pregnancy
- Lesson 7: Prenatal Care
- Lesson 8: Unhealthy Relationships
- Lesson 9: Human Trafficking

DISEASES AND DISORDERS

➤ HIV/AIDS

➤ STD/STI